

Appendix B

List of Plans

1. Location Plan
2. Site Plan as Existing
3. Site Plan as proposed
4. General Arrangement
5. Landscaping and Ecological mitigation plan
6. Ground Floor Plan as proposed
7. East and West elevations
8. North and South elevations
9. 3d View
10. Materials Board

SAFETY, HEALTH AND ENVIRONMENTAL INFORMATION
 In addition to the hazards/risks normally associated with the types of work detailed on this drawing, note the following risks and information.
 Risks listed here are not exhaustive. For residual architectural risks, refer to D5 H&S Risk Register.

CONSTRUCTION:

DEMOLITION:

For information relating to Use, Cleaning and Maintenance, refer to the above H&S Risk Register.
 It is assumed that all works will be carried out by a competent contractor working, where appropriate, to an approved method statement.

NOTES:

This document is the property of Boeing and was produced for specific purposes connected with the captioned project only. It is not to be used for any other purpose and the user agrees to indemnify Boeing against any claims, damages or costs arising from the use of this document being relied upon by any other party, or being used in any way other than that intended by Boeing. Boeing does not accept any responsibility for the consequences of this document being relied upon by any other party, or being used in any way other than that intended by Boeing, which is due to an error or omission in data supplied to Boeing or its designers by other parties. This document contains confidential information and its use, disclosure or distribution to any other party not shown to other parties without consent from Boeing.

Rev	Date	Drawn	Description	Checked By
02	10.07.17	GMD	S1 - Approved following specialist's	GMD
01	23.06.17	GMD	S1 - Issued to Client for Approval.	MH

Not for Construction

M M
MOTT MACDONALD
 Mott MacDonald
 1177 Commercial Road
 London E16 2NF
 UK
 T +44 (0) 20 872 2200
 F +44 (0) 20 860 0200
 www.mottmac.com

Boeing
 Boeing Commercial Aviation
 Services Europe Ltd

Project: GoldCare Gatwick

Drawing title: Materials Board

CAD file	author	checked	date	revision
GMD	MH	MH	23/06/17	1:1@A1
IS	IS	IS	1:1@A1	STD
STANDARD	STANDARD	STANDARD	STANDARD	STANDARD
revision	revision	revision	revision	revision
777-D5A-00-ZZ-SK-A-4013				P02



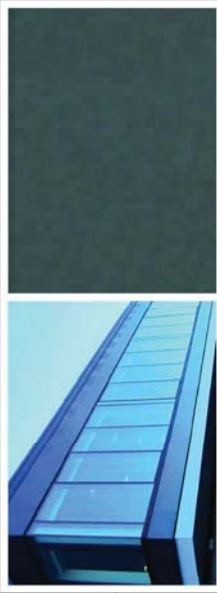
Light Cladding Type 2
 BA_7035



Curtain Walling To Hangar Door Satin Anodised Aluminium/
 Clear Glazing With Inhibitive Sputtered Lower



Vertical Panels To Hangar Doors
 Translucent Polycarbonate In Natural Anodised Aluminium Frame



Curtain Walling
 Satin Anodised Aluminium / Clear Glazing



Light Grey (Sarnelli 9525) And Dark Grey (Sarnelli 9500) Roof Membrane Contrasting Colour Coded To Adjacent Cladding With
 Contrasting Walkway To Roofs



Photovoltaic Panels To Low Level Roof



Rooflights To Low Level Roof
 Translucent Polycarbonate In PPC Aluminium Frame



Dark Cladding type 1
 RAL 7016